

Cable Rollers



*ELECTRICAL
& RENTALS*

About Us



EX Electrical and Rentals in Perth has earned a strong reputation for reliable service, quality products, and trusted industry partnerships. Our dedication to excellence and customer satisfaction has positioned us as a preferred supplier across the electrical and construction sectors.

We supply a wide range of cable rollers in various sizes and styles, with options available to suit specific project requirements. Custom solutions can also be arranged to meet individual customer needs.

At EX Electrical and Rentals, we're committed to delivering exceptional quality and service on every job. Our focus on reliability, performance, and customer care continues to earn the confidence of clients throughout the region.

What is the Cable Roller

Cable rollers, also known as cable pulleys, are essential tools used in the construction and electrical industries for efficient cable laying. They help guide and protect cables during installation, reducing friction and preventing damage. Ideal for cable-laying contractors and utility providers, cable rollers are a key part of any

At EX Electrical and Rentals, we supply a comprehensive range of cable rollers, including ground cable pulleys, power cable pulleys, overhead string pulleys, nylon rollers, straight and corner cable rollers, triple rollers, and large-diameter or dual-use

Our most popular options include straight, corner, and triple cable rollers, along with specialized rollers designed for underground cable installations through trenches and ducts.



Features

C A B L E R O L L E R

- Robust and Solid design
- Smooth surface finish
- Long lasting service
- Heavy duty and light duty for options
- Anti friction
- Easy to install
- Damage free



Advantage

C A B L E R O L L E R



- ① Little friction will protect the cable from damage.
- ② Labor-saving and make the work more easy.
- ③ Sturdy reel, save and long service life time.
- ④ Customization is acceptable
- ⑤ Able to carry high loads
- ⑥ With chromel steel ball bearing
- ⑦ With a high load-bearing capacity
- ⑧ Self-lubrication, precision machined and low friction
- ⑨ Low noise, stable performance and durable
- ⑩ Able to work in sub-zero temperatures and have low rolling resistance
- ⑪ Suitable for countless applications: sliding pipe, machine equipment and other sliding systems

Introduction

C A B L E R O L L E R

Material Finish available in Cable Pulley Rollers:

- Cold Zinc Galvanized (Electro Plated)
- Powder Coated
- Spray Painted by colorful plastic

EX also offers other finishes according to clients' detailed requirements.



Cold Zinc Galvanized



Powder Coated



Spray Painted by colorful plastic

Cable roller types:

● Ground Cable Roller, aluminium

Abrasion resistant aluminium rollers, galvanized steel tube frame dust- and soil proof ball bearings, large ground clearance.

● Ground Cable Roller, steel

Abrasion resistant steel rollers, galvanized steel tube frame dust- and soil proof ball bearings, large ground clearance

● Ground Cable Roller, synthetic

Non-aging and weatherproof, extreme light weight, highly shock-resistant stackable, large ground clearance, for cables up to Ø 100 mm

Benefit of Cable guide roller:

- In underground or on ground cable laying process, the power cables are pulled using these specially designed cable rollers.
- These rollers are designed & manufactured considering all road & ground conditions for easy friction less cabling.
- In overhead cabling system specially designed rollers are used which can be mounted on Am-Strut Channel & Cable Trays. This helps the over head cabling of heavy cables more easy and fast job.

Four wheels can be selected:



▲
Nylon materia



▲ **High quality nylon**



▲
Aluminum alloy



▲
Cast iron

/ XTCR-01

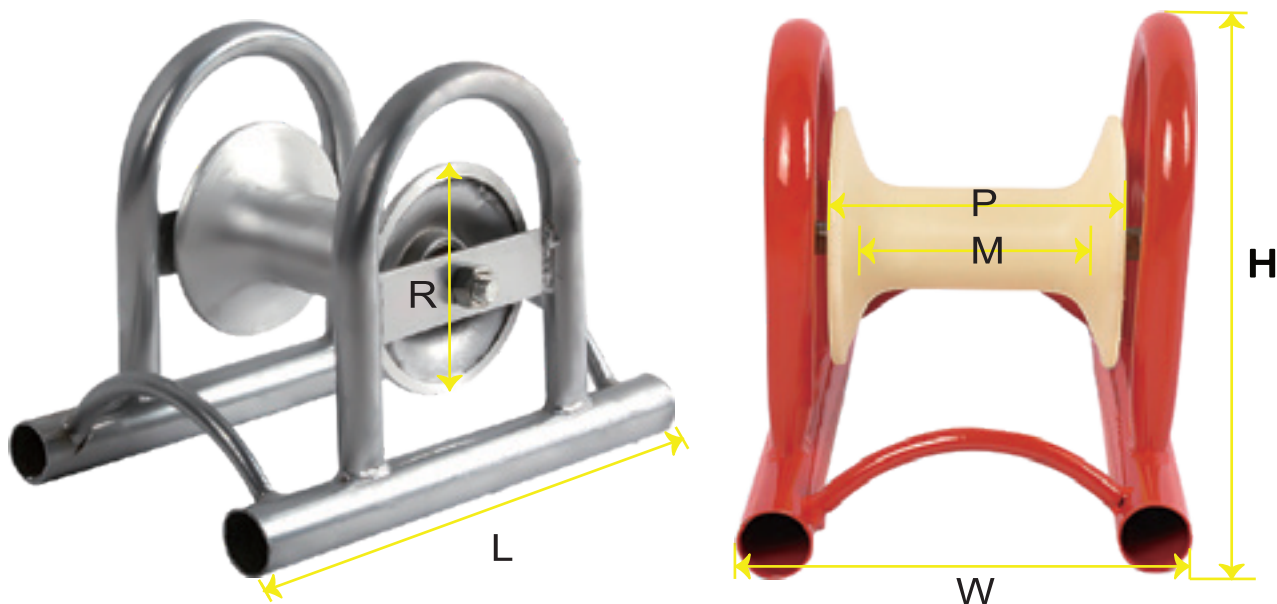
Composition: Made of Heavy Duty Steel Construction.

Application: Used as a bridge roller for laying cables in trenches.

Advantage: Maintenance free, water proofed, rubber sealed ball bearings;
Can be easily placed over existing cables in the trenches.



► Specifications



Product model	XTCR-01
wheel outer dia(mm)--R	140
wheel Inner length(mm)--M	100,130
wheel Length (mm)-P	150,160,185
Cable Capacity	155mm
Carrying Load	300Kg
Finish	Electro Galvanized/Hot Dip Galvanized.
Size(mm) (L*W*H)	300x240x250 330x230x260 330x250x260 310x230x270
Weight (kg)	4KG-5KG
Construction	Medium Duty(4kg); Heavy Dut(5kg)
Remarks: the roller can be nylon material or aluminum alloy material. As a manufacturer, Customization is acceptable to suit your individual requirements.	

XTCR-02

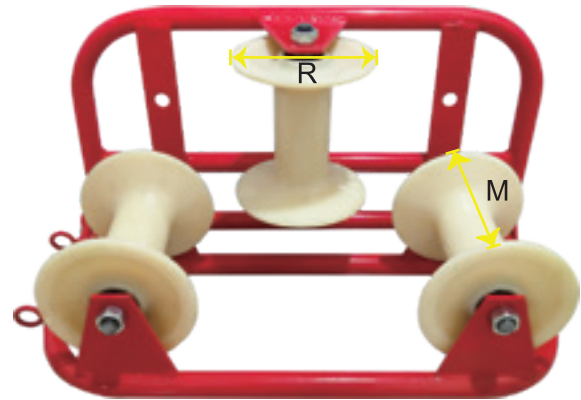
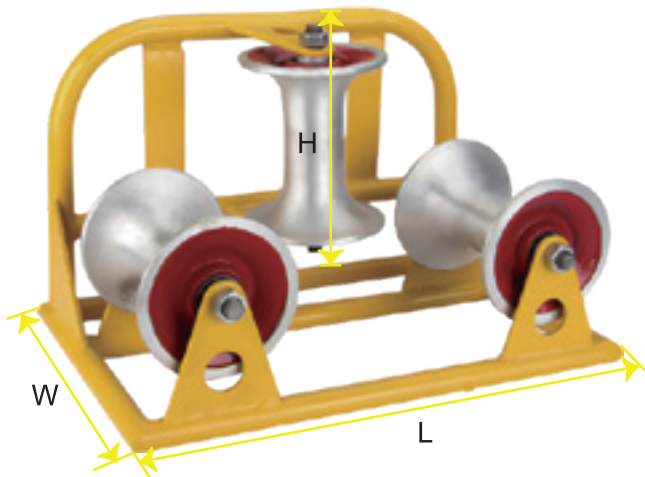
Composition: Made of Heavy Duty Steel Construction

Application: Designed to safely guide cable around corners.

Advantage: Maintenance free, water proofed, rubber sealed ball bearings.
Can be linked together with stake pins



► Specifications



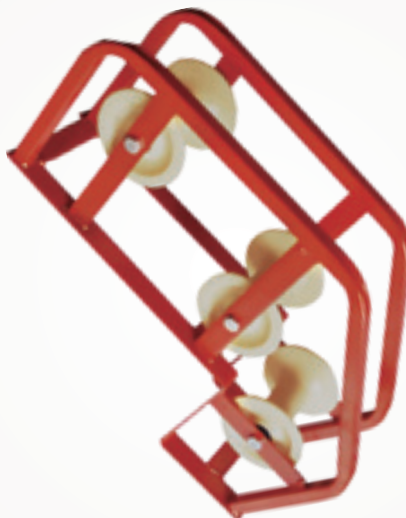
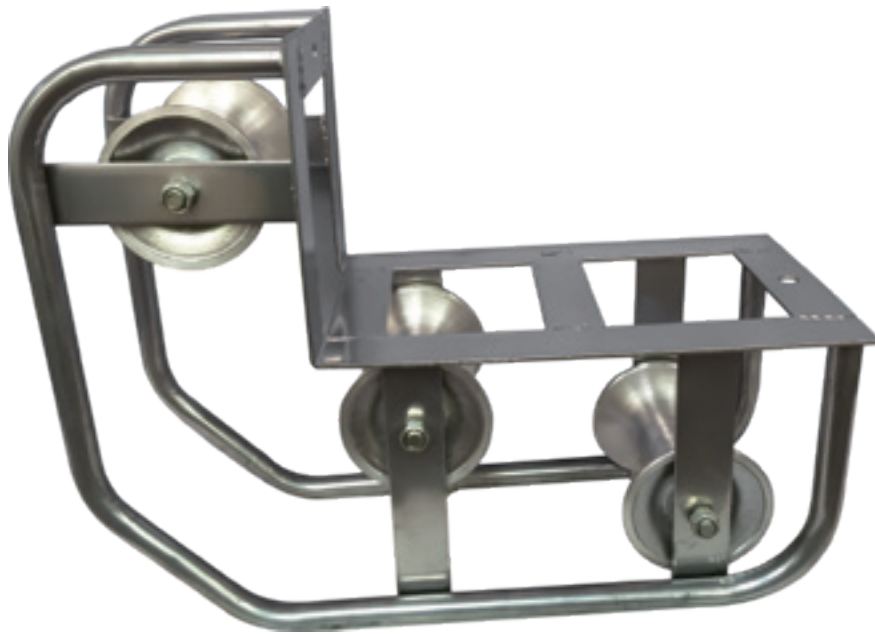
Product model	XTZR-02		
Wheel Length(mm)--M	160		
Wheel dia(mm)--R	140		
Size(mm) (L*W*H)	530x300x300 140x60x165	420x320x320 170x100x225	
Cable Capacity	155mm		
Carrying Load	300Kg		
Weight (kg)	10KG-12KG		
Finish	Electro Galvanized/Hot Dip Galvanized.		
Construction	Medium Duty(10kg); Heavy Dut(12kg)		
Wheel materia	Aluminum alloy material	Nylon materia	Cast iron
Remarks: As a manufacturer, Customization is acceptable to suit your individual requirements.			

XTCR-03

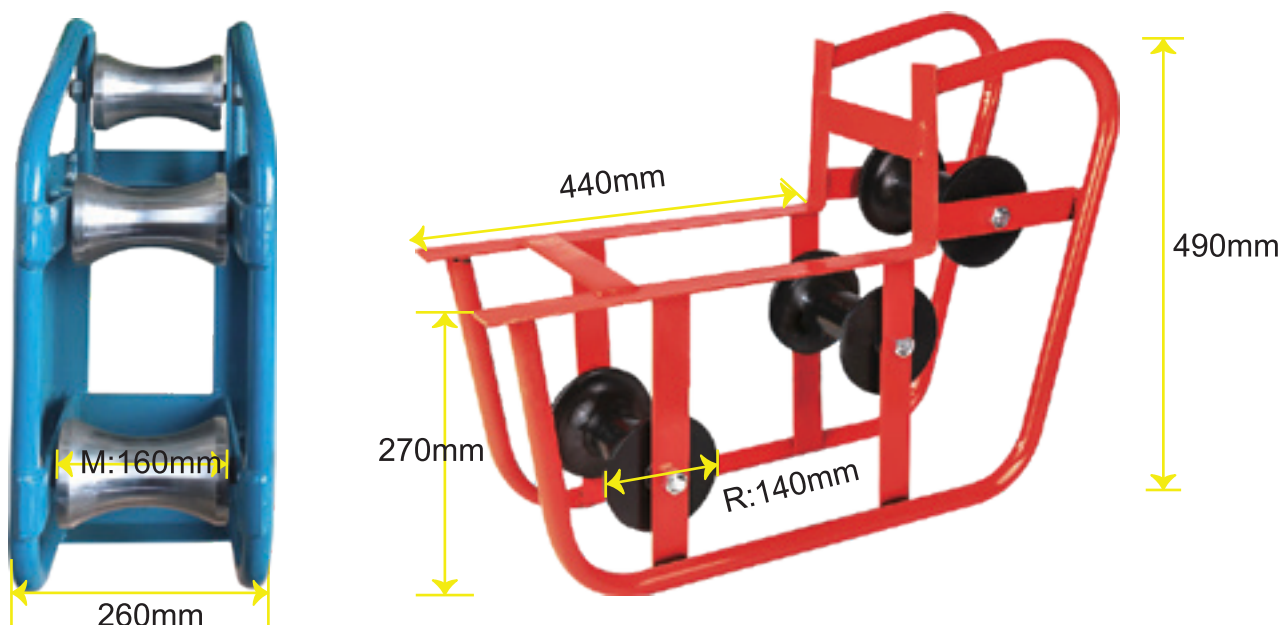
Composition: Made of steel construction.

Application: Placed at the entrance to guide the cable in manhole.

Advantage: Maintenance free ball bearings.



► Specifications



Product model	XT-CR-03		
Wheel Length(mm)--M	160		
Wheel dia(mm)--R	140		
Size(mm)	490x260x270		
Cable Capacity	155mm		
Carrying Load	300Kg		
Weight (kg)	10kg-12.1kg		
Finish	High quality galvanized finish / Powder coating finish		
Construction	Medium Duty(10kg); Heavy Dut(12.1kg)		
Wheel materia	Aluminum alloy material	Nylon materia	Cast iron
Remarks: As a manufacturer, Customization is acceptable to suit your individual requirements.			

/ XTCR-04

The feeding sheave made by steel structure welded, surface treatment by zinc plating, fit with aluminum casting roller or nylon wheel, there have two precision deep groove ball bearings fitted in the wheel, the bearings both side have the rubber seals to effectively resist dust, we use Grade 8.8 Hex bolts and hex Locknut.

The feeding sheave for cable laying works, assembled conduit outlet, it can open and closed, put the cable on it, pull the cable through the feeding sheave first, the roller on the sheave turn smooth, in order to let the cable through the conduit smooth, to protect the surface of the cable.



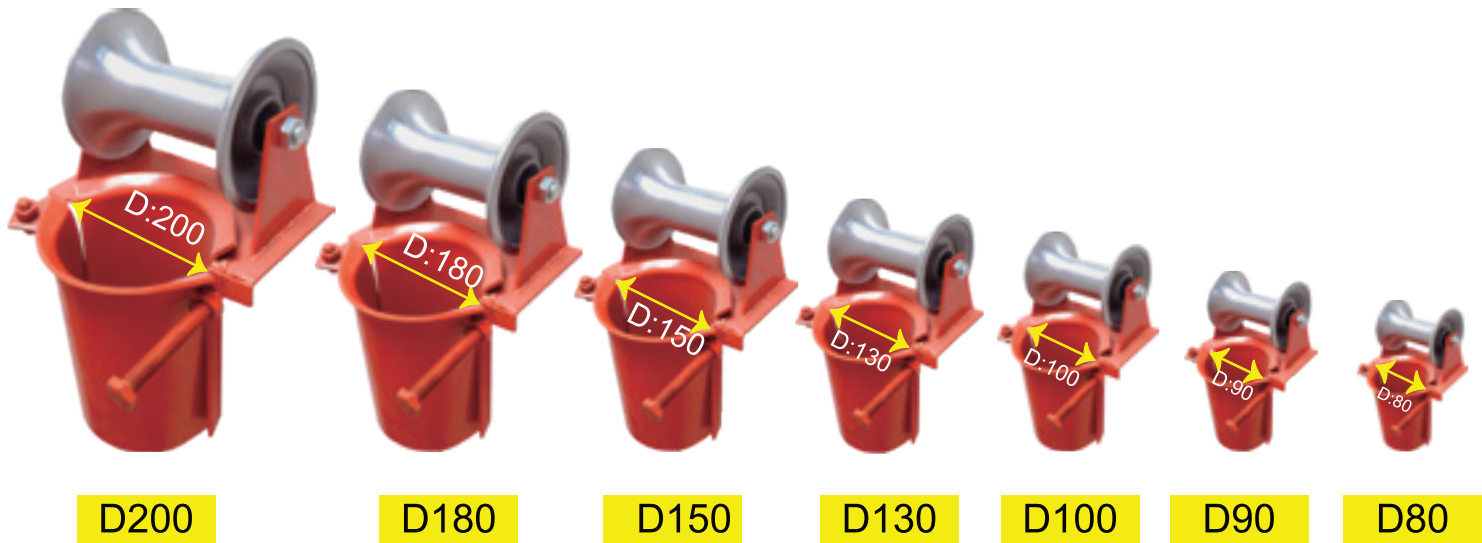
Composition: Made of steel construction.

Application: Cable Pulley is used for releasing the cable, can change the angle.

Advantage: Protect duct mouth & minimizes damages to the cable.
Maintenance free, water proofed, rubber sealed ball bearings.



► Specifications



D200

D180

D150

D130

D100

D90

D80

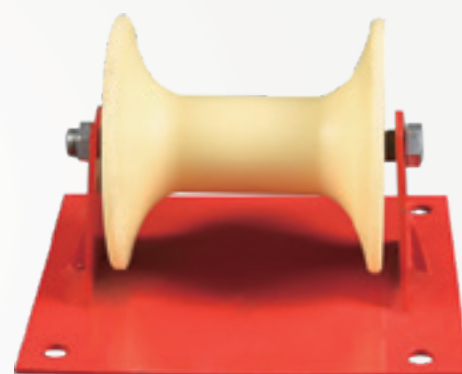
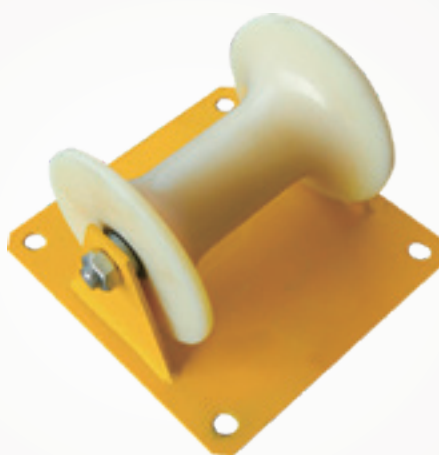
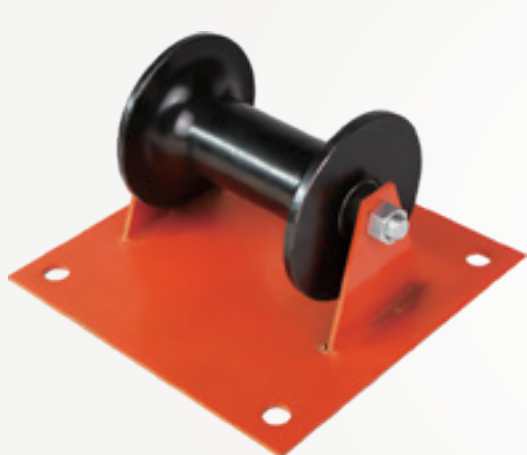
Wheel Length(mm)	160						
Wheel dia(mm)	140						
Diameter of pipe hole	Ø 80	Ø 90	Ø 100	Ø 130	Ø 150	Ø 180	Ø 200
Weight (kg)	4.3kg (Ø 80)	4.9kg (Ø 90)	5.2kg (Ø 100)	6.3kg (Ø 130)	7.6kg (Ø 150)	9.5kg (Ø 180)	11kg (Ø 200)
Cable Capacity	155mm						
Carrying Load	300Kg						
Finish	Electro Galvanized/Hot Dip Galvanized.						
Construction	Medium Duty(4.3kg); Heavy Dut(11kg)						
Wheel materia	Aluminum alloy material			Nylon materia		Cast iron	
Remarks: As a manufacturer, Customization is acceptable to suit your individual requirements.							

XTCR-05

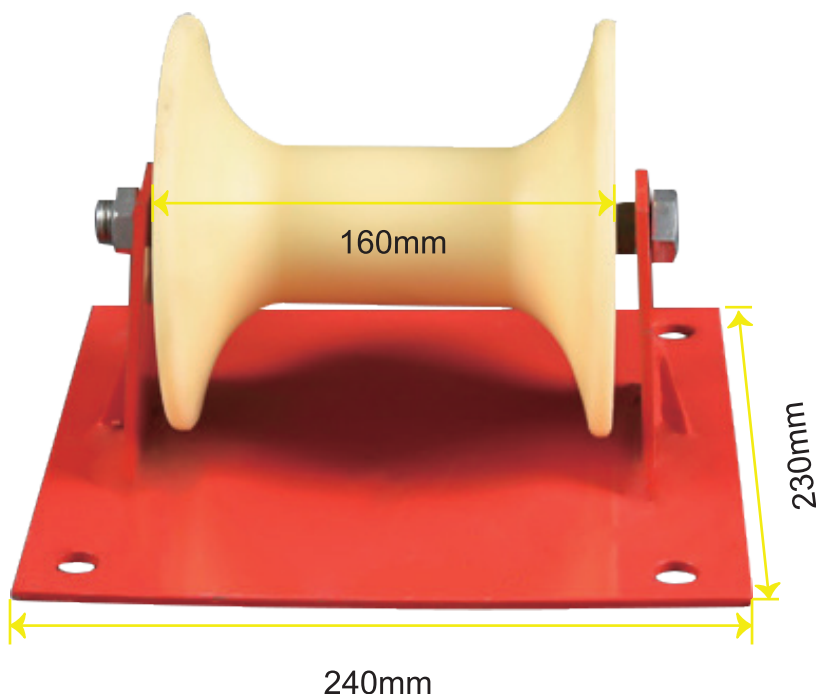
Composition: Made of steel construction.

Application: Placed at the entrance to guide the cable .

Advantage: This pulley is a single-line linear wheel with four corners for easy fixing.



► Specifications

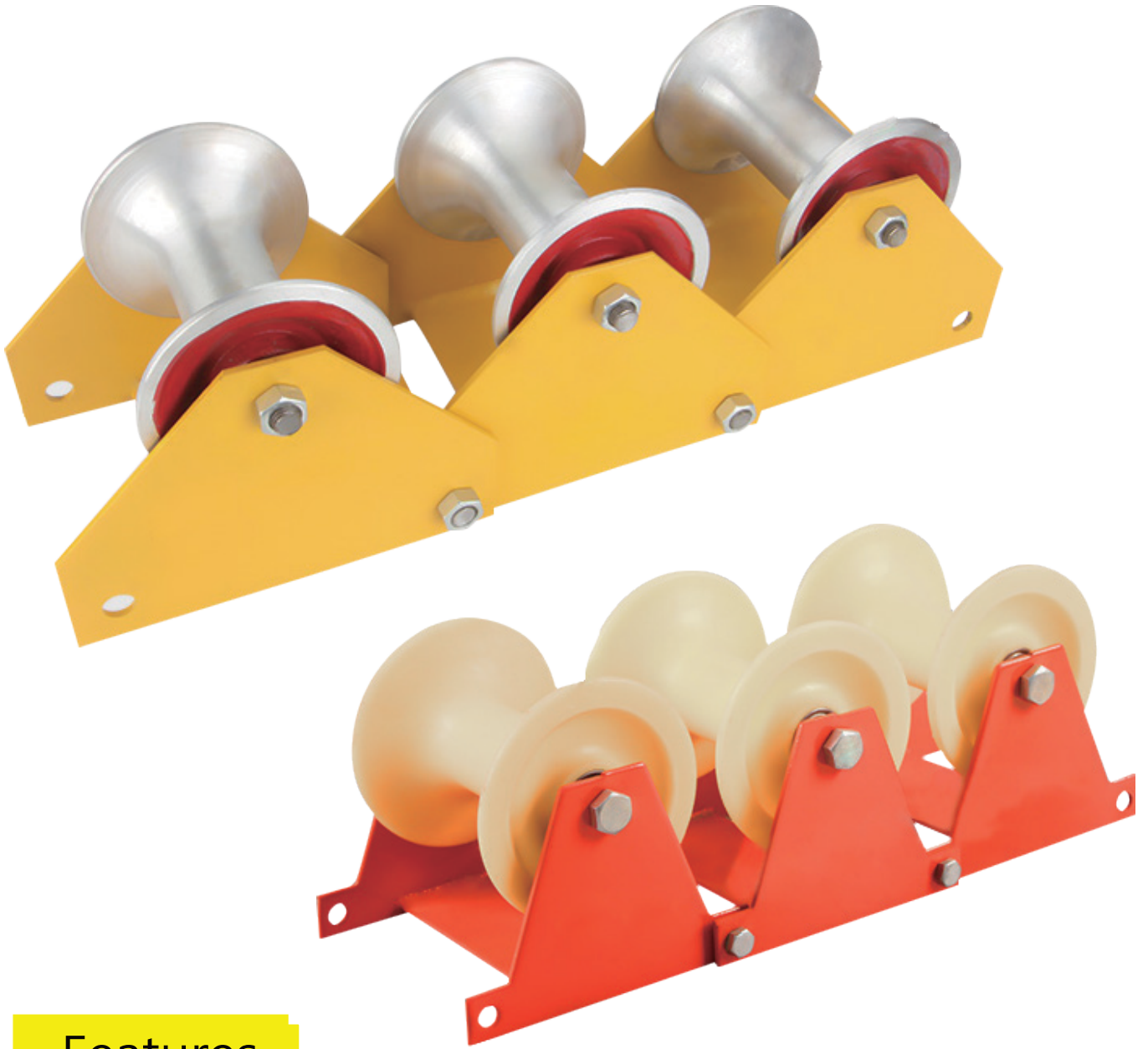


Size: 240x230

- Length: 240mm
- Width: 230mm
- Wheel length: 160mm
- Cable Capacity: 150mm

Product model	XTCR-05		
Rated Load(KN)	12-15		
Range (mm)	≤150		
Size	140x160 240x230	160x165 340x350	
Weight (kg)	4.2-5.1		
Construction	Medium Duty(4.2kg); Heavy Dut(5.1kg)		
Wheel materia	Aluminum alloy material	Nylon materia	Cast iron
Remarks: As a manufacturer, Customization is acceptable to suit your individual requirements.			

XTCR-06

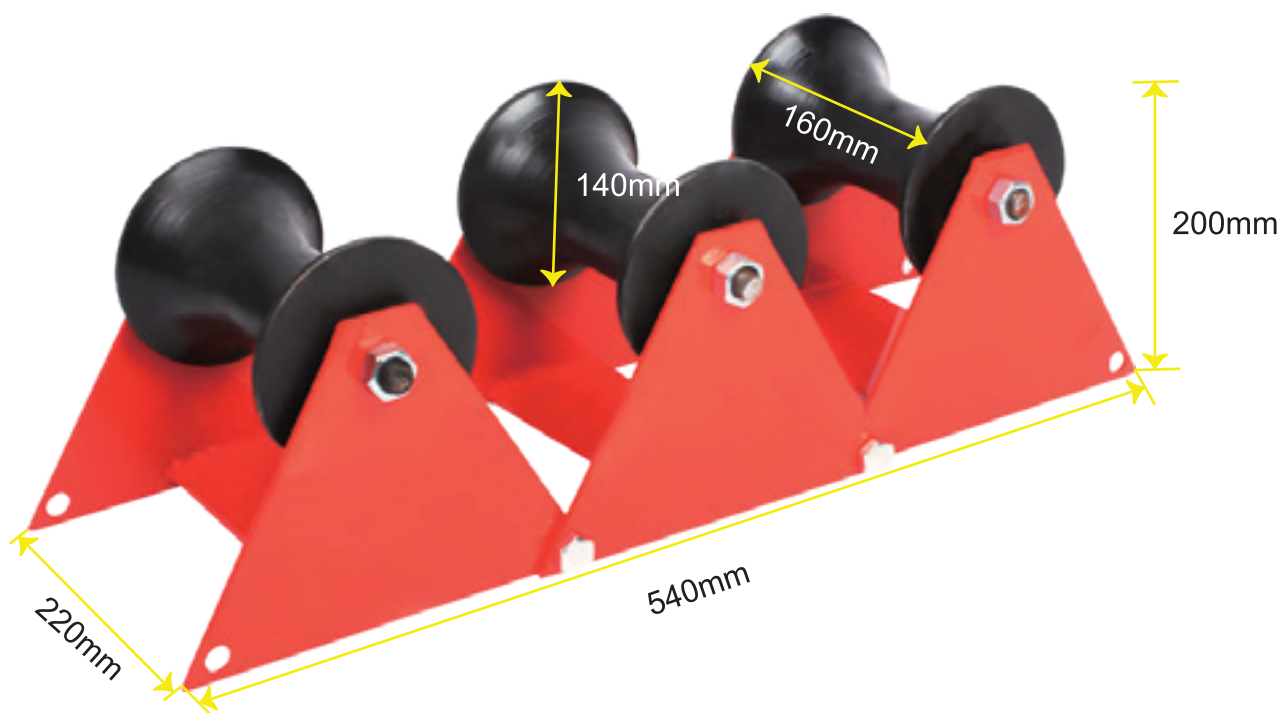


Features

This type is called a three-wheel cable roller. It has the following characteristics:

- ▶ It can single use only or use in series. The connection part is bolt, so it can change the angle as you want.
- ▶ Using spiral springs as power without electric energy consumption to keep reliable in operation
- ▶ Using collector slip spring carbon brush bracket to transfer the electric energy steadily and continuously
- ▶ Use small power to get more effect

► Specifications

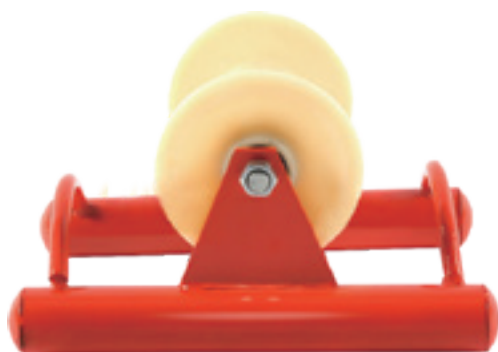


Product model	XT-CR-06		
Rated Load(KN)	12-15		
Range (mm)	≤150		
Size	540x220x200 580x210x185		
Weight (kg)	8.1---8.5		
Construction	Medium Duty(8.1kg); Heavy Dut(8.5kg)		
Wheel materia	Aluminum alloy material	Nylon materia	Cast iron
Remarks: As a manufacturer, Customization is acceptable to suit your individual requirements.			

XTCR-07

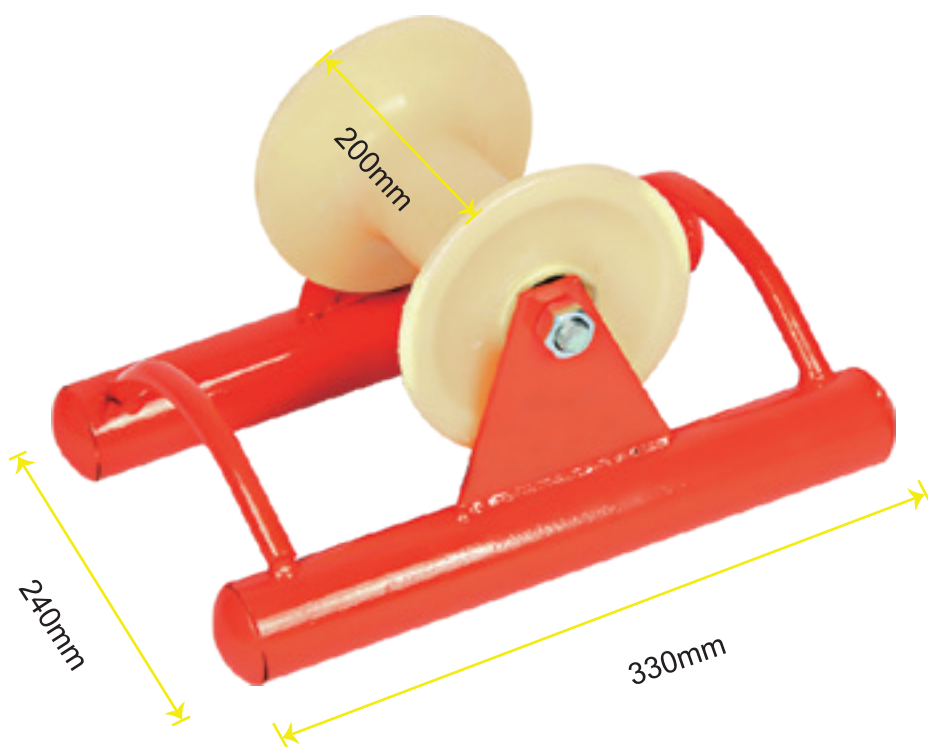
► Straight running

High quality material, strong and wear resistant, protect the cable from friction



Specifications

- Length: 330mm
- Width: 240mm
- Wheel length: 200mm
- Cable Capacity: 150mm
- Weight (kg): 3.8kg
- Wheel materia:
 - Aluminum alloy material
 - Nylon materia
 - Cast iron



XTCR-08



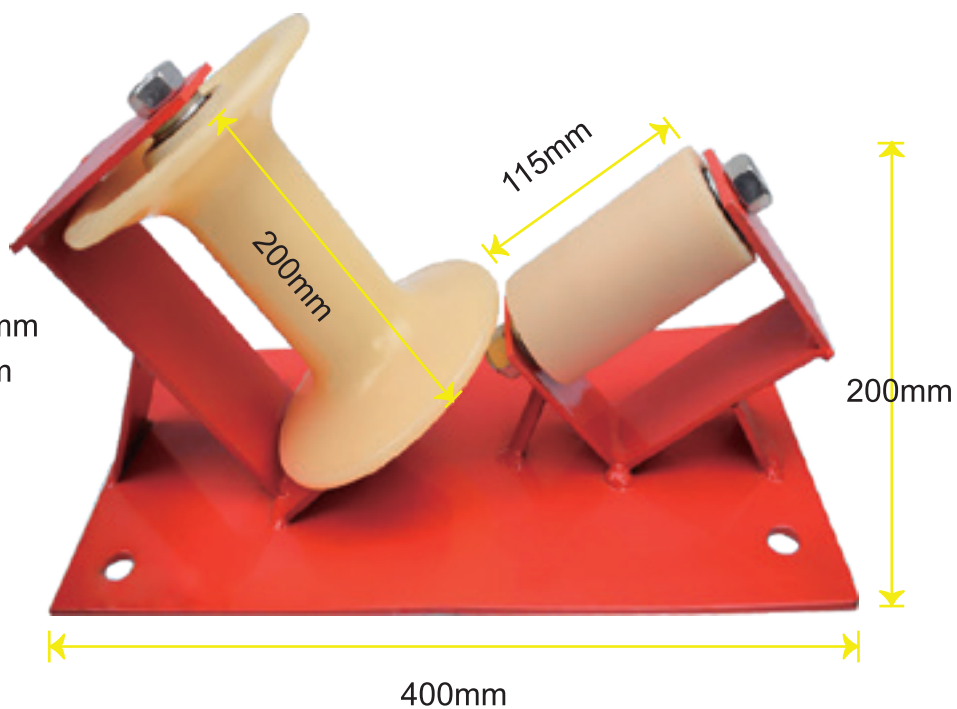
Two-wheel corner

High quality material, strong and wear resistant, protect the cable from friction



Specifications

- ▶ Length: 400mm
- ▶ Height: 200mm
- ▶ Cable Capacity: 150mm
- ▶ Length of the small wheel: 115mm
- ▶ Length of the big wheel: 200mm
- ▶ Wheel materia:
 - Aluminum alloy material
 - Nylon materia
 - Cast iron



XTCR-09

Cable conductor pulley block overview

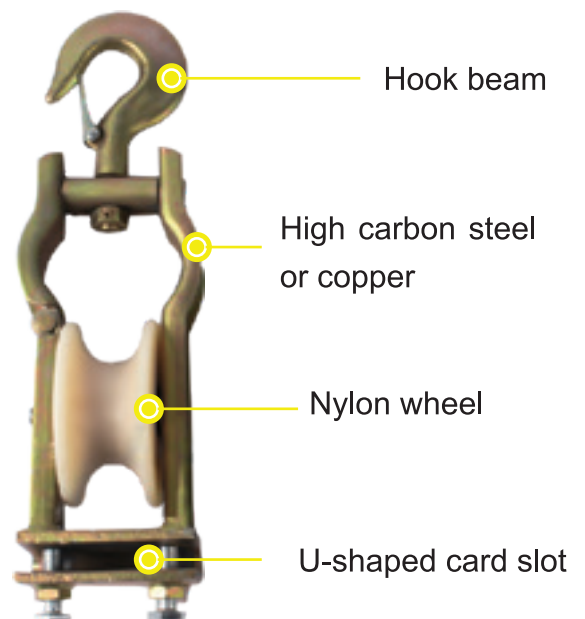
Cable conductor pulley block is often laid in open trench where the road and ground conditions result in the cable route having a number of curves. With the cable's own weight and the high tensions involved the cable cannot be fed cleanly.

The pulley block from SINTA is made of aluminium or nylon, frame is high grade galvanized steel or copper. The sturdy and robust steel frames are completely galvanized and guarantee a long working life even under extreme conditions.

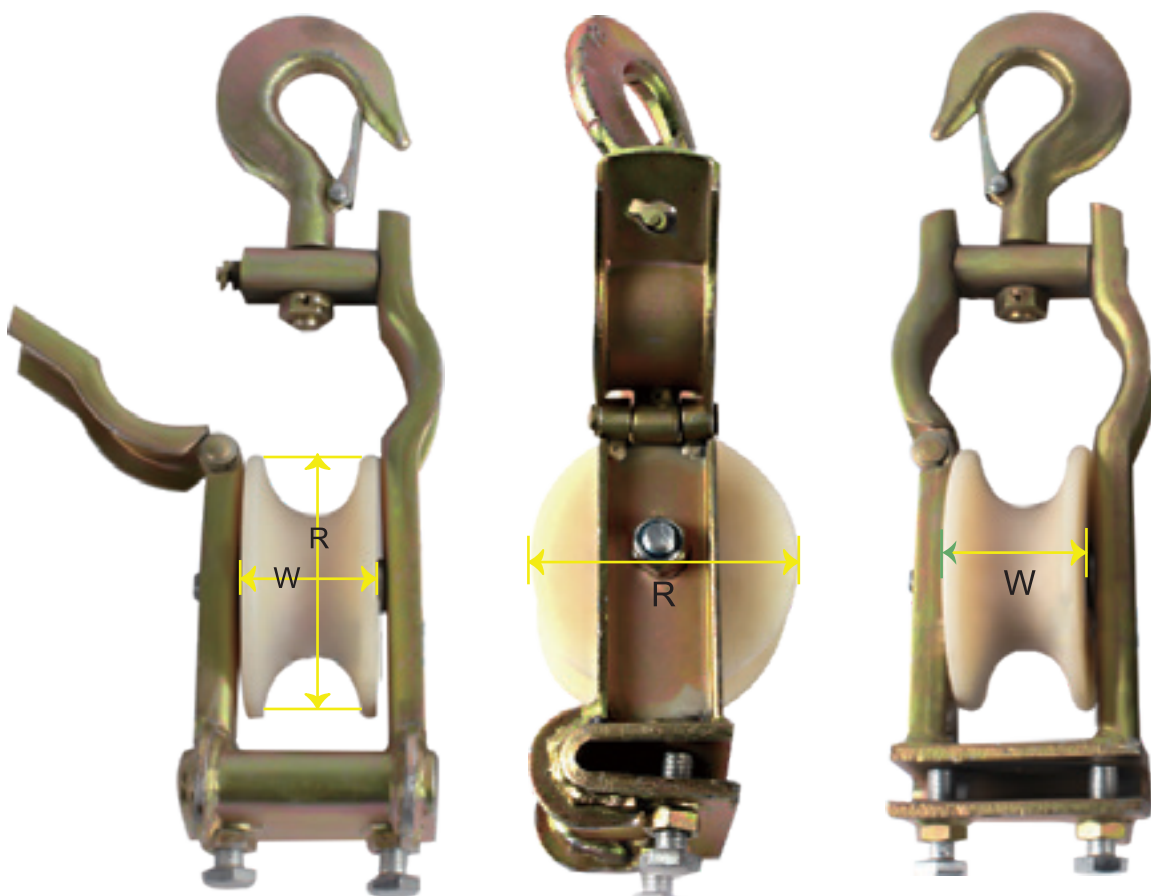


Features

- ▶ To put aluminum wire, steel core aluminum strands wire, insulated wire delay in pole and tower
- ▶ Cable roller wheel groove can be through a lamp pipe, aluminum casing, connector etc
- ▶ The material is divided into aluminum alloy, copper and MC nylon.
- ▶ Pulley pendant divided into joint plate and hook typ
- ▶ **This type of pulley can be used for suspension or fixed use.**



► Specifications



XTCR-09-01		
Model	80*50(R*W)	120*60(R*W)
Load(KN)	5	20
Weight	1.8kg	3.3kg
Applicable Wire	25-185	35-240
Hook load bearing	0.5T	2T
Process	The surface is galvanized	
Applicable to angle steel cross-section, extending medium and small interface wires		



XTZR-09-02					
Products No	XTZR09-02-1	XTZR09-02-2	XTZR09-02-3	XTZR09-02-4	XTZR09-02-5
Diameter	Φ80mm	Φ80mm	Φ100mm	Φ100mm	Φ120mm
The wheel width	35mm	50mm	35mm	50mm	60mm
Applied cable dia	25-120mm ²	25-180mm ²	25-150mm ²	25-180mm ²	25-240mm ²
Weight	1kg	1kg	1.25kg	1.25kg	2.75kg
Hook load bearing	0.5T	0.5T	0.5T	0.5T	1T

XTCR-10

This type of cable roller is die-cast from cooked aluminum, which is light in weight, high in strength, high in abrasion resistance, and not broken or cracked. The wheel is painted with red paint to serve as a warning.

This type of pulley is available in three types: hanging, sun-facing, fixed and hanging dual-purpose: A, B, and C.



XTCR-10-A

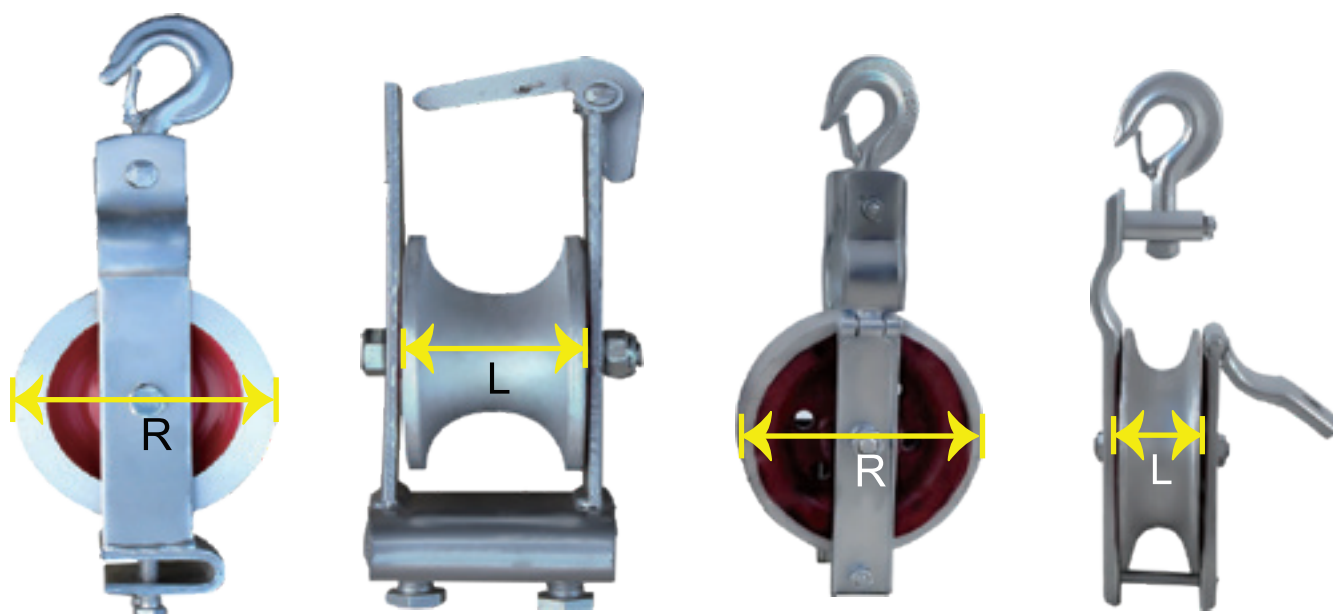


XTCR-10-B



XTCR-10-C

► Specifications



Remarks: ► Product model is in pulley specifications, for example, 80*30 is R*L(mm).
 ► The B type is limited to 150.

XTCR-10-(80-150)

Model.	80*30	80*50	100*40	100*50	100*35	120*35	120*40	120*60	120*80	150*40
Line diameter	25-120	25-180	25-150	25-180	25-150	25-150	25-150	25-240	25-300	25-150
Weight	1kg	1.25kg	1.5kg	1.5kg	1.25kg	1.5kg	1.75kg	3.5kg	4kg	3.5kg
Load bearing	0.5T	0.5T	0.5T	0.5T	0.5T	0.5T	0.5T	1T	1T	1T

XTCR-10-(150-200)

Model.	150*60	150*50	150*75	150*100	180*40	180*50	200*40	200*50	200*60	／
Line diameter	25-240	25-150	25-300	25-300	25-150	25-180	25-150	25-180	25-240	／
Weight	4kg	3.5kg	3.5kg	5kg	4kg	4kg	4.5kg	4.5kg	5kg	／
Load bearing	1T	1T	2T	1T	1T	1T	2T	2T	2T	／

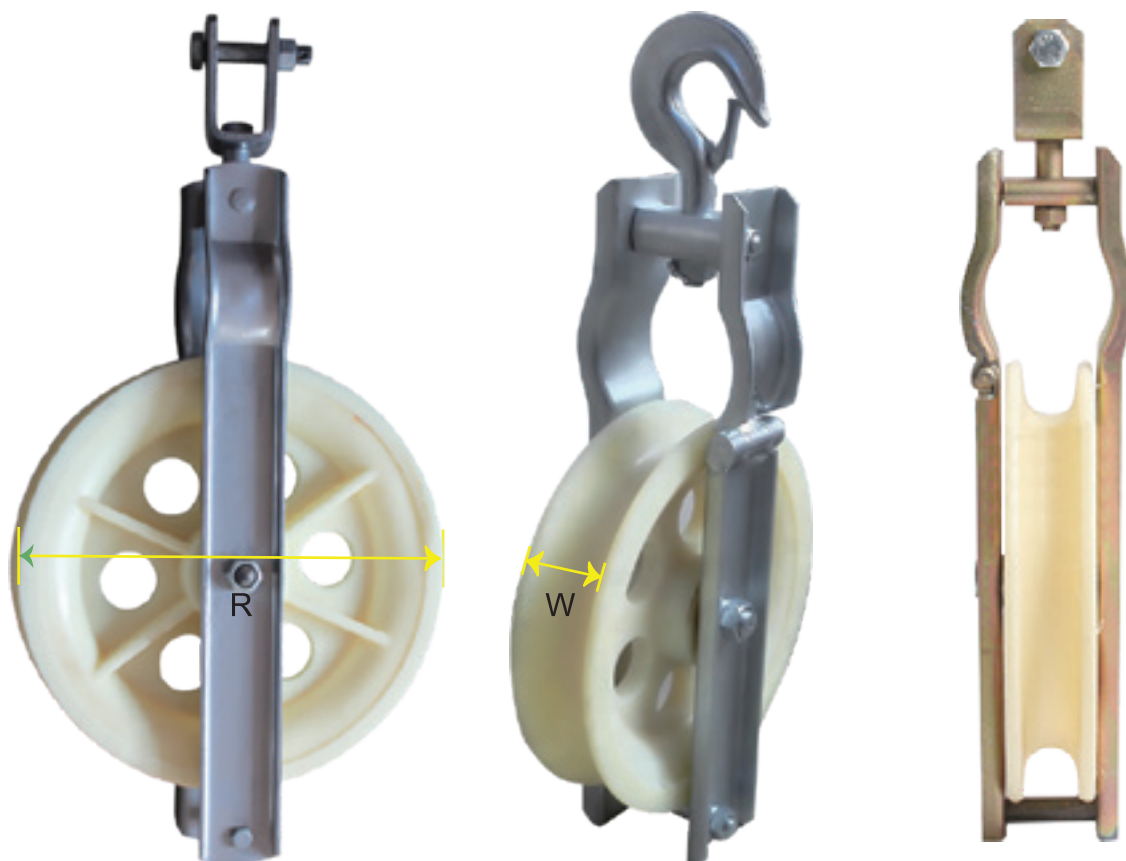
/ XTCR-11



Features

- ▶ Cable roller divided into joint plate and hook type.
- ▶ The material is divided into aluminum alloy and MC nylon.
- ▶ Adopt the iron plate thickening, the pulley integral anti-tension property improvement, more stable and more durable.

► Specifications

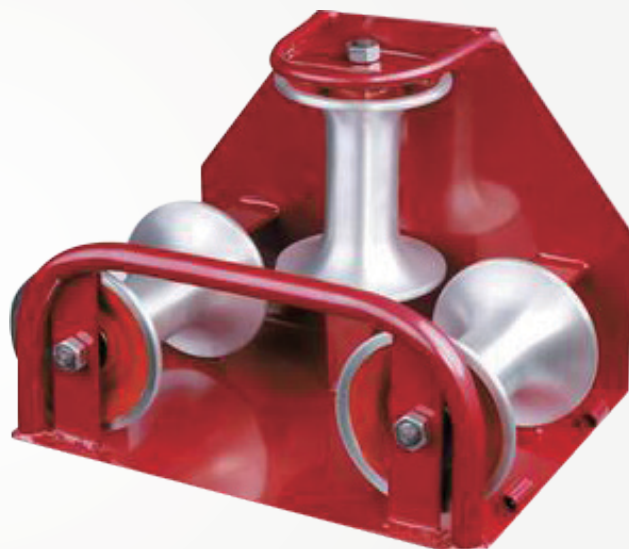
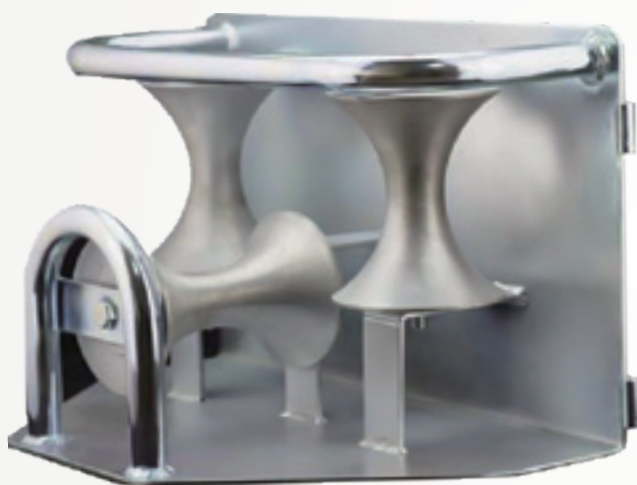
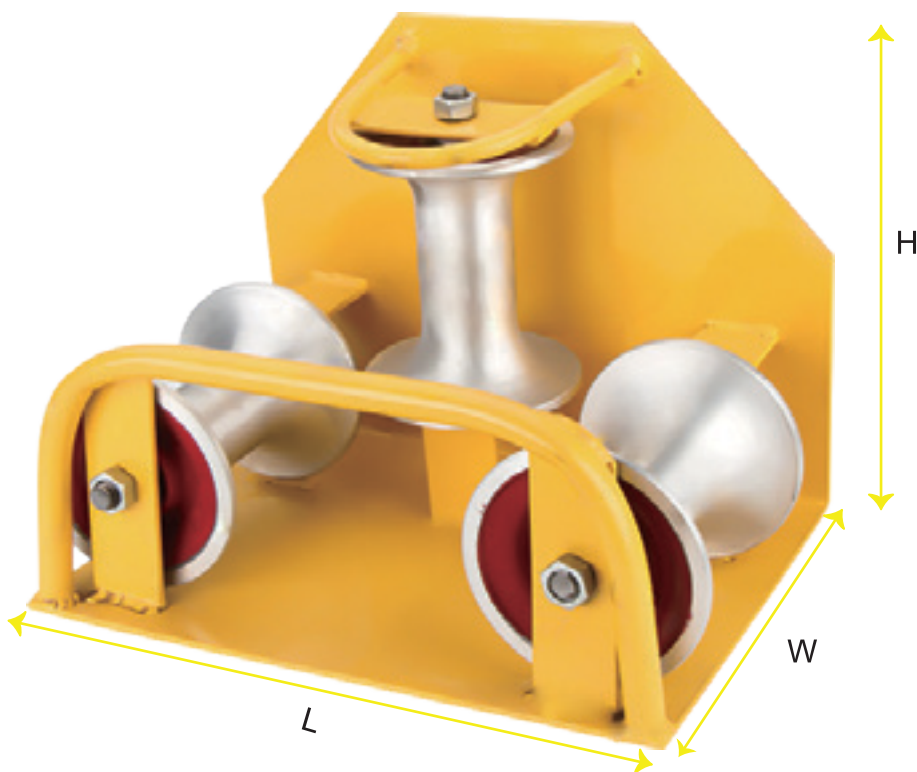


Products No	Diameter*The wheel width(mm)	Application of wire(LGJ)	Rated load (KN)	Weight (kg)	
				Nylon wheel	Aluminum wheel
XTCR-11-1	Φ120*30	25-70	5	1.5	2
XTCR-11-2	Φ160*40	95-120	10	2.5	3.2
XTCR-11-3	Φ200*40	150-240	15	3.6	4
XTCR-11-4	Φ200*60	150-240	15	4	4.6
XTCR-11-5	Φ220*50	150-240	15	4	4.6
XTCR-11-6	Φ250*60	300-400	20	4.5	6
XTCR-11-7	Φ320*60	300-400	20	6.7	9.5
XTCR-11-8	Φ400*80	400-500	20	13	15

XTCR-12

Specifications

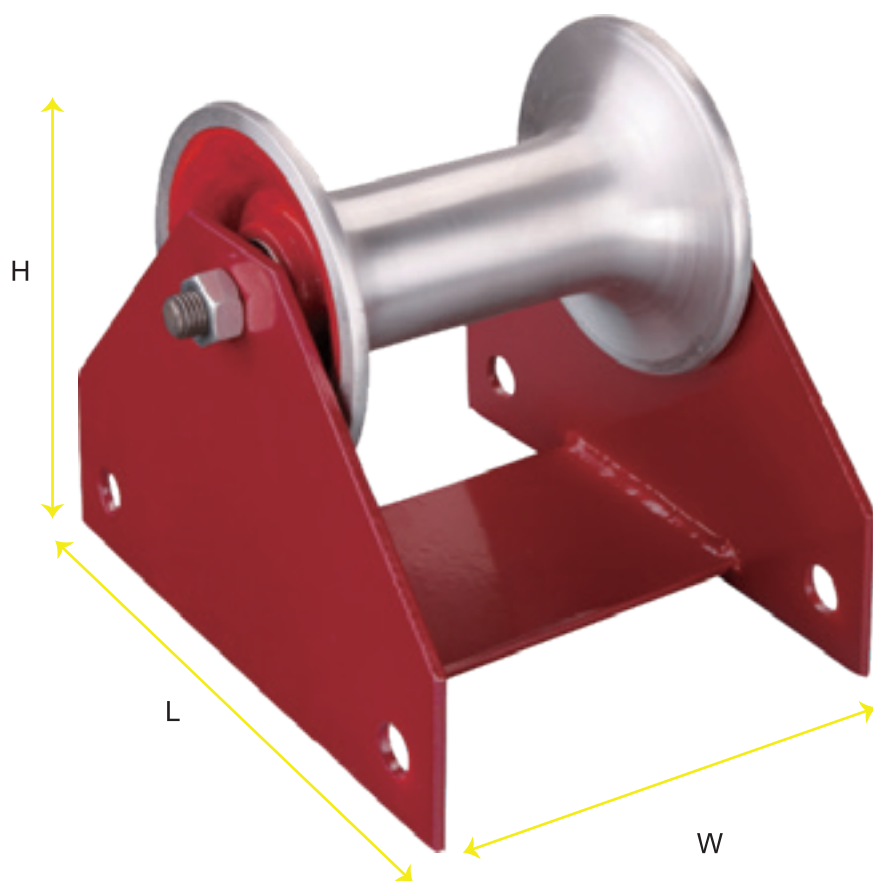
- ▶ Length: 530mm
- ▶ Width: 300mm
- ▶ Height: 300mm
- ▶ Cable Capacity: 155mm
- ▶ Carrying Load: 300Kg
- ▶ Material: Cast iron; Aluminum alloy material; Nylon material.



XTCR-13

Specifications

- ▶ Length: 280mm
- ▶ Width: 220mm
- ▶ Height: 180mm
- ▶ Rated Load: 12KN
- ▶ Range: $\leq \Phi 150\text{mm}$
- ▶ Material: Cast iron; Aluminum alloy material; Nylon material.



XTCR-14

This type of nozzle is often laid in open trench where the road and ground conditions result in the cable route having a number of curves. With the cable's own weight and the high tensions involved the cable cannot be fed cleanly.

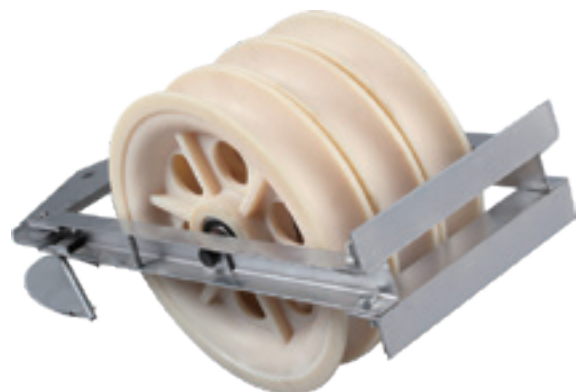
The pulley block is made of aluminium or nylon, frame is high grade galvanized steel or copper.

The sturdy and robust steel frames are completely galvanized and guarantee a long working life even under extreme conditions.



Features

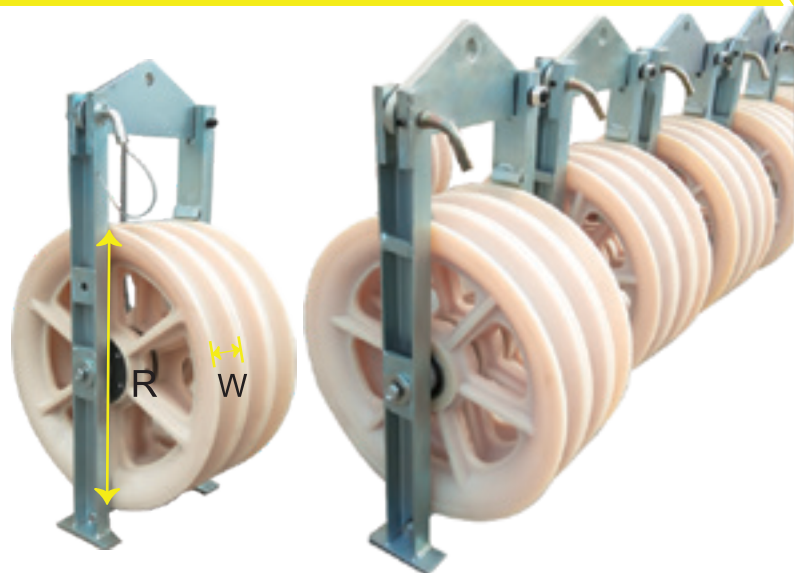
- ▶ To put aluminum wire, steel core aluminum strands wire, insulated wire delay in pole and tower.
- ▶ Cable roller wheel groove can be through a lamp pipe, aluminum casing, connector etc.
- ▶ The material is divided into aluminum alloy and MC nylon.
- ▶ Pulley pendant divided into joint plate and hook type.



► Specifications

Remarks: R: Diameter
W: Width

We can also customize the size as needed.



Products No	Number of wheel	The wheel Diameter(mm)	The wheel width(mm)	Rated load (KN)	Application of wire(LGJ)
XTCR14-508-1	1	Φ508	75-100	20	≤400
XTCR14-508-3	3	Φ508	75-100	40	≤400
XTCR14-508-5	5	Φ508	100	60	≤400
XTCR14-508-7	7	Φ508	100	100	≤400
XTCR14-660-1	1	Φ660	100	20	≤500
XTCR14-660-3	3	Φ660	100	40	≤500
XTCR14-660-5	5	Φ660	100	60	≤500
XTCR14-660-7	7	Φ660	110	100	≤500
XTCR14-822-1	1	Φ822	110	30	≤630
XTCR14-822-3	3	Φ822	110	60	≤630
XTCR14-822-5	5	Φ822	110	90	≤630
XTCR14-822-7	7	Φ822	110	120	≤630
XTCR14-822-9	9	Φ822	110	150	≤630
XTCR14-916-3	3	Φ916	110-120	120	≤800
XTCR14-916-5	5	Φ916	110-120	150	≤800
XTCR14-916-7	7	Φ916	110-120	180	≤800
XTCR14-916-9	9	Φ916	110-120	180	≤800
XTCR14-1000-3	3	Φ1000	150	150	≤1250

XTCR-15



Specifications

- ▶ The wheel diameter:130mm
- ▶ The wheel width:120mm
- ▶ Rated Load: 12KN
- ▶ Range: $\leq \Phi 150\text{mm}$
- ▶ Materia: Cast iron;
Aluminum alloy material;
Nylon materia.





*ELECTRICAL
& RENTALS*

Ex Electrical & Rentals

Add: 231 Adelaide Tce, unit 19 (Head Office)

1D/1 Trandos Road, NEERABUP, Wa (Storage Facilities)

